

# Images of London's highest residential gym on Isle Of Dogs revealed

Landmark Pinnacle will also feature a roof terrace on the 75th floor and an indoor garden square filled with trees and flowering plants

🕒 1 December 2017



Written by **LAURA ENFIELD**

An indoor garden square will be created as part of the [Landmark Pinnacle](#) development on the Isle Of Dogs.

Filled with flowering plants and pathways, apparently it will emulate green spaces in Mayfair and Chelsea.



Its east side will have views over the Thames while the west, designed with children's play in mind, overlooks South Dock, Canary Wharf and The O2.

It is part of a raft of amenities being created by developer Chalegrove Properties in a bid to entice buyers to purchase the 752 homes in the tower.



When complete, it will stand at 239m and be topped by a roof terrace on the 75th floor, said to be the capital's loftiest.

Fitness-loving residents will also be able to reach new heights, we're promised, at London's highest residential gym on the 56th floor.

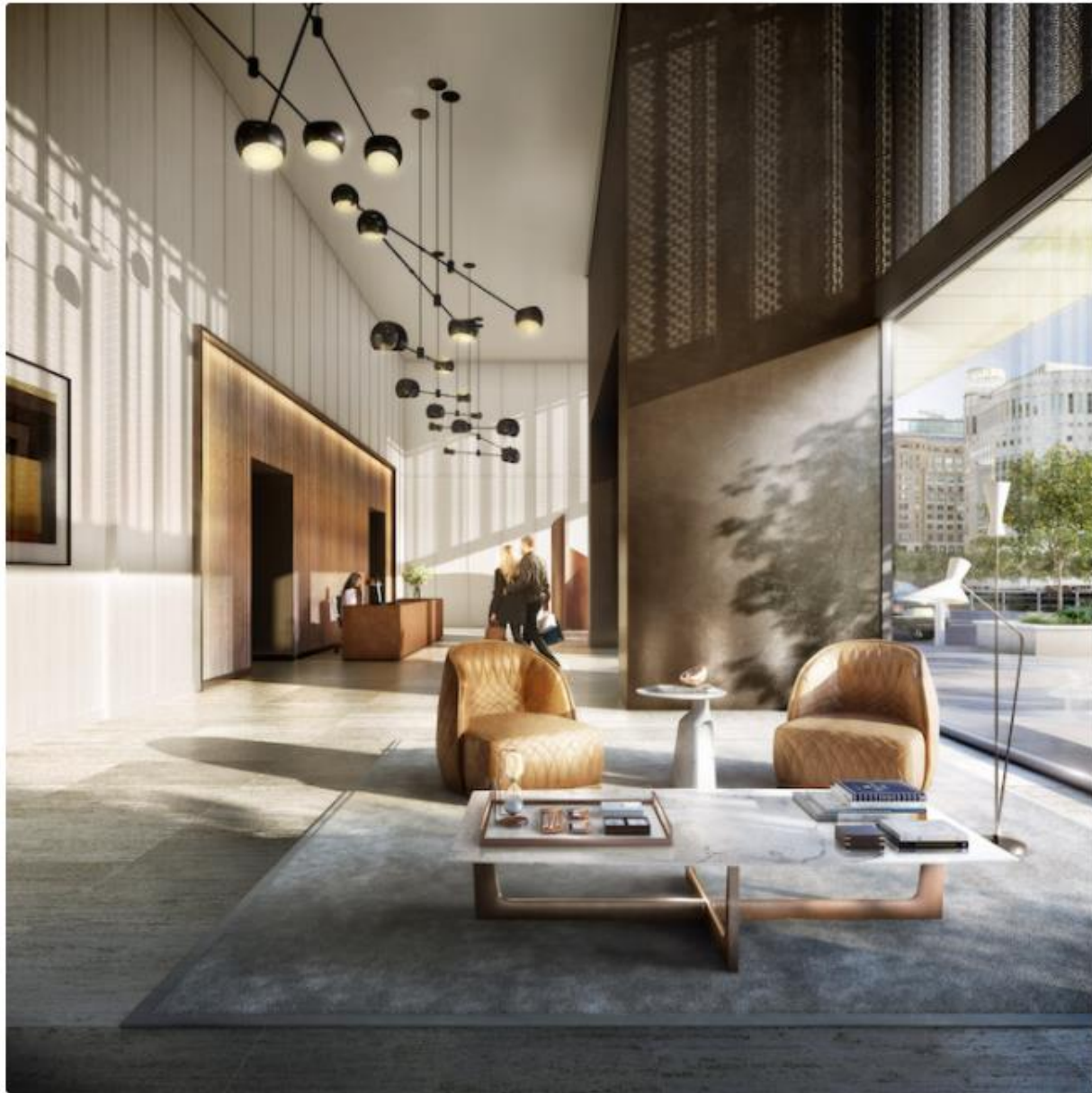


The 2,650sq ft space will feature a fitness studio, a free weights area and a set of treadmills, exercise bikes and cross trainers facing floor-to-ceiling windows so visitors can admire the views as they sweat.

The floor will also house a golf simulator, a putting green, two arcade rooms with snooker tables, a lounge and relaxation rooms as well as two private dining areas, each complete with a bar lounge and dedicated kitchens.

In total the development will feature more than 25,000sq ft of amenity space with roof gardens, a 4,500sq ft park by the entrance and a first floor cinema room with 24 luxury leather recliner seats and a private bar.

Chalegrove Properties operations director David Richardson said: “Our aim when designing the amenities was to produce spaces residents would actively use and get excited about.



"We wanted to maintain a sense of luxury, while being efficient with the facilities we included.

“From the outset we wanted to try and avoid reproducing the standard features that look good in a brochure and tick a box but are rarely used and ultimately become dead space.”

Landmark Pinnacle has been designed by architectural practice Squire And Partners and is the final addition to the Landmark Trilogy consisting of the 45-floor Landmark East and 30-floor Landmark West.

It is on the market with Knight Frank and JLL with homes ranging from suites to one, two and three-bedroom apartments, and a collection of penthouses.

**Prices start at £475,000 and the first residents are expected to move in during the autumn of 2020.**

Call **020 3905 6826** or go to [landmarkpinnacle.co.uk](https://landmarkpinnacle.co.uk) for more information