


9 skyscrapers that will transform the London skyline by 2020

Aria Bendix

Sep. 29, 2018, 5:14 AM  8,273



FACEBOOK



LINKEDIN



TWITTER



EMAIL



PRINT



London is in the midst of an unprecedented architectural boom, with around 510 tall towers — those with more than 20 stories — planned or under construction in the next decade.

Much of this development will take place in the next two years.

As new buildings spring up along the waterfront, residents are bracing for the sudden transformation of their neighborhoods.

Forthcoming structures include a 26-story high-rise with a rock-climbing window and a mixed used development with the world's first "floating" swimming pool.

Here are nine of the most stunning skyscrapers that will transform the London skyline by 2020.

Twentytwo



AXA IM/Ipton Rogers

It takes 3.3 million pounds of steel a week to construct Twentytwo, a 26-story "vertical village" that's set to become one of London's tallest towers.

The project — formerly known as The Pinnacle — was rebranded after developers ran out of money in 2012. The new building, which will be completed in 2019, features a rock-climbing window on the 42nd floor for some of its more adventurous tenants.

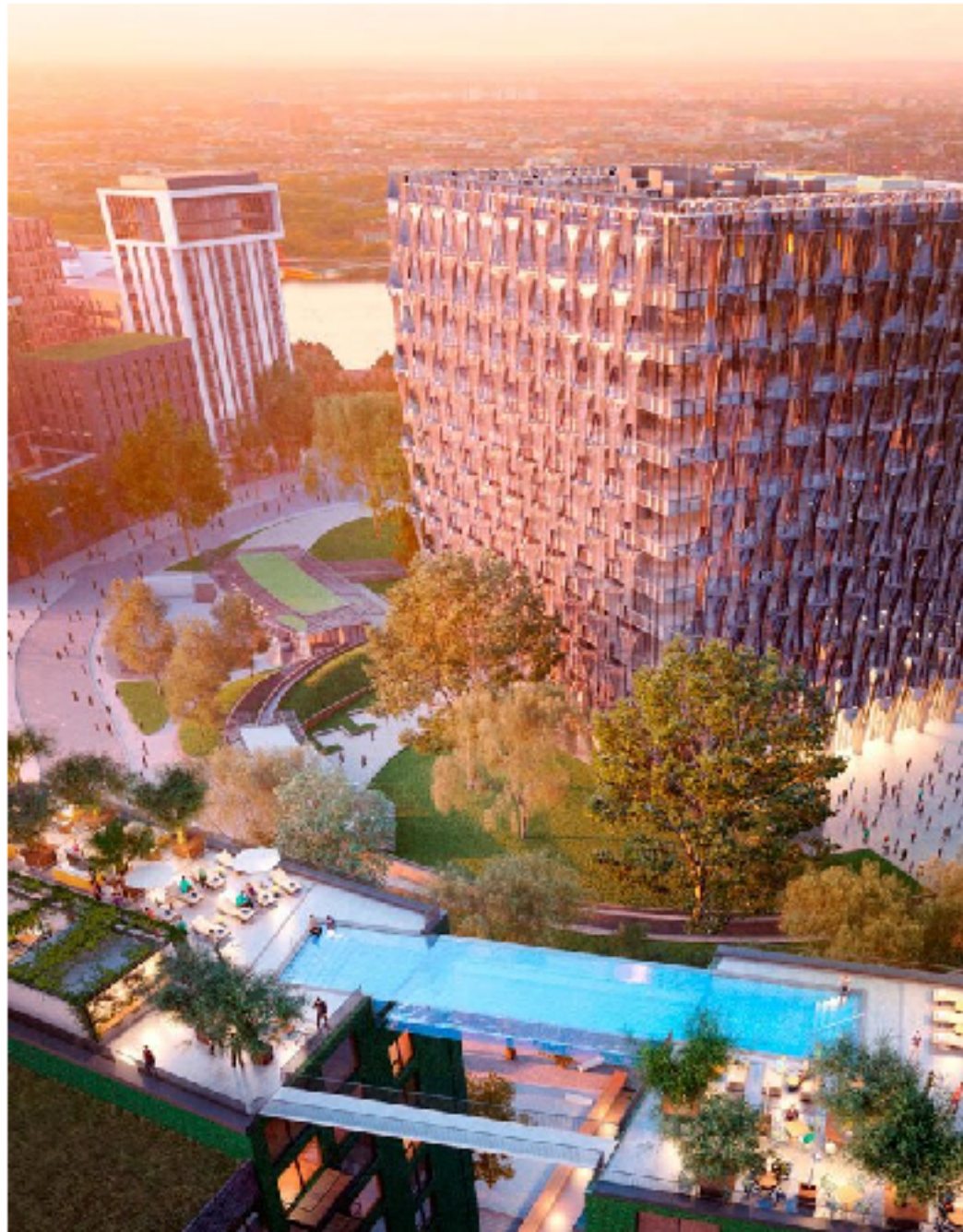
Can of Ham



[Matt Brown/Flickr](#)

Yes, that's actually the nickname for this 24-story office building, which bears a slight resemblance to potted meat. The structure won planning approval in 2008, but its construction was delayed due to the financial crisis.

Embassy Gardens



The central London neighborhood is in its third and final phase of construction. In addition to hosting the US Embassy, Embassy Gardens offers nearly 2,000 residences and 130,000 square feet of retail and dining space.

Its key architectural feature is Sky Pool, the world's first "floating" swimming pool, which stretches between two buildings. The project's Linear Park also provides 24/7 pedestrian access. It was inspired by the High Line in New York City.

Chelsea Waterfront



[Dun.com/Flickr](https://www.dun.com/flickr)

Construction on the Chelsea Waterfront is well underway, with developers working on a trio of riverside buildings consisting of two glass residential towers and the redeveloped Lots Road power station.

The shorter of the two towers, Tower West, was unveiled to the public in June. Apartments are sold to start at around \$2.6 million.

Landmark Pinnacle



David Holt/Flickr

At 784 feet tall, Landmark Pinnacle offers 360 degree views of the city and River Thames – the kind one might only experience from an airplane or helicopter.

The first round of residential units, which start at around \$587,000, are expected to be finished by March 2020.

One Blackfriars



FTI Consulting

At 50 stories high, One Blackfriars is London's tallest residential tower. Upon completion at the end of the year, the skyscraper will feature more than 270 apartment units and a boutique hotel with more than 160 bedrooms.

Its design — which has garnered the nickname "the Vase" — was inspired by a glass Scandinavian vessel owned by the architect, Ian Simpson.